





# contents

**About DMD 02**

**Helmet Collection 05**

Vintage 05

Handmade 25

SeventyFive 33

Racer 37

Rocket 43

Accessories 46

**Apparel Collection 49**

Scarves 49

Jackets Solo rider 57

T-shirts and fleeces 61

Bags 64

**Display 66**



RIDING  
IS A  
STATE OF MIND  
Go for it



**DMD** is the market leader in the Vintage helmet business because it found the way to improve the original 70's shell design matching it with all the modern safety standards.

The focus of the company was to change the traditional shape of the helmet into a retro version in order to make the helmet a fashion and stylish accessory with an original design.

The company worked very hard on the dimension of the helmet in order to get the smallest homologated shell of its category with a perfect fit and maximum compactness.

**DMD** Vintage helmet is not only smart and distinctive but also designed for maximum head comfort and protection.

**DMD** brand is a synonymous of high quality, safety and comfort.





# vintage

## collection

The Vintage Helmet is a remake of the famous and iconic 70's shell and it is the smallest homologated helmet of its category.

The shell is made in fiberglass and it has a very high comfort thanks to its fabulous inner lining.

The focus of the company was to change the traditional helmet shape into a retro version in order to make the helmet a fashion and stylish accessory with an original design.

The collection is available in more than 30 graphics; each model has its own personality and they have cool custom paints.

### TECHNICAL DETAILS:

- > Fiberglass Shell
- > Removable and washable liner
- > Two different shells for perfect fit and maximum compactness
- > Integrated Snaps for Visors/Shields
- > Padded chin strap with Double D-ring closure
- > ECE – DOT Homologation

The Vintage helmet comes in two different shells:

<b>SMALL SHELL</b>	<b>XS</b> 54 cm	<b>S</b> 56 cm	<b>M</b> 57/58 cm
<b>NORMAL SHELL</b>	<b>L</b> 59 cm	<b>XL</b> 60 cm	



**MATT BLACK**



**AMERICA**



**SOLID BLACK**



**SOLID WHITE**





**HD\***



**TRIPLE**



**STUNT ORANGE**



**STUNT SILVER**



**STAR BLACK\***



**STAR GREEN\***



**STAR WHITE**



**FIGHTER\***



STAR COMET\*

\*matt



**GLITTER GOLD**



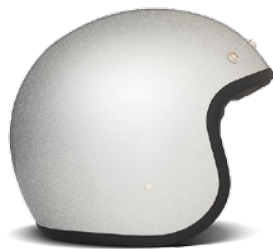
**GLITTER BRONZE**



**GLITTER PINK**



**GLITTER BLACK**



**GLITTER SILVER**





## WOODSTOCK



## FELIX\*

\*matt



**SHARK\***



**MILITARY\***



STICKY\*

\*matt



**ELECTRIC**



ROAD TRIP





**ROCK N ROLL**



VIDA LOCA\*

\*matt



**BORN FREE\***



OLD SCHOOL\*

\*matt



CIRCUS\*





VISION\*

\*matt



**THUNDER\***

\*matt



# handmade

## collection

Dedicated to those who love to stand out, moved from the desire of possessing a rare and precious helmet. Cool custom designs, handmade painted, with vintage taste and own style.

### **TECHNICAL DETAILS:**

- > Carbon kevlar shell
- > Handmade painted
- > Removable and washable liner
- > Padded chin strap with Double D-ring closure.
- > ECE – DOT Homologation



SMILE\*



OLD\*





**MARS\***



CROSS\*

\*matt



**SQUARE\***



LINE\*

\*matt



GREY\*



# seventyfive

## collection

SeventyFive is a tribute to the stylish icon of the 70'S. DMD launched a new replica of that helmet giving a new soul for all the riders who wish to be back to the raceways of the Golden Age.

The helmet is an improved design of the Racer model and the name comes from the year when the company was born.

The helmet has slotted air vents to increase air supply and it has 3 snaps for a snap on visor.

It has a space large enough for goggles.

### TECHNICAL DETAILS:

- > Carbon kevlar shell
- > Removable and washable liner
- > Padded chin strap with Double D-ring closure
- > ECE-DOT Homologation

The SeventyFive helmet comes in two shells:

<b>SMALL SHELL</b>	<b>XS</b> 53/54 cm	<b>S</b> 55/56 cm	<b>M</b> 57/58 cm
<b>NORMAL SHELL</b>	<b>L</b> 59/60 cm	<b>XL</b> 61/62 cm	<b>XXL</b> 63 cm





**YELLOW**



**BLACK\***

\*matt



**WHITE**



**BLUE**

\*matt



# racer

## collection

The Racer helmet is a new and improved design based on the first full-face Motocross helmet introduced in 1975.

The full-coverage style with extra facial protection is built up around the noose and you will have an extra protection for your "winning smile".

It has a space large enough for goggles.

### TECHNICAL DETAILS:

- > Carbon kevlar shell
- > Removable and washable liner
- > Padded chin strap with Double D-ring closure
- > ECE - DOT Homologation

The Racer helmet comes in two shells:

<b>SMALL SHELL</b>	<b>XS</b> 53/54 cm	<b>S</b> 55/56 cm	<b>M</b> 57/58 cm
<b>NORMAL SHELL</b>	<b>L</b> 59/60 cm	<b>XL</b> 61/62 cm	<b>XXL</b> 63 cm



**RACER WHITE**



**RACER BLACK\***

\*matt



FLASH



## TRIBAL







# rocket

## collection

The Rocket helmet comes up with the idea to improve the design based on the first full-face helmet introduced in the market in 1970, matching it with all the modern safety standards.

Available in white and black as options.

DMD also introduced a "Racing Line" (white, black and gold) dedicated to all the riders nostalgic of the "old-style" races.

### TECHNICAL DETAILS:

- > Carbon kevlar shell
- > Removable and washable liner
- > Padded chin strap with Double D-ring closure
- > ECE – DOT Homologation

The Rocket helmet comes in two shells:

<b>SMALL SHELL</b>	<b>XS</b> 53/54 cm	<b>S</b> 55/56 cm	<b>M</b> 57/58 cm
<b>NORMAL SHELL</b>	<b>L</b> 59/60 cm	<b>XL</b> 61/62 cm	<b>XXL</b> 63 cm



**SOLID WHITE**



**SOLID BLACK**



**RACING BLACK**



**RACING GOLD**



**RACING WHITE**

# accessories

DMD offers a variety of high quality shields



## **BIG VISOR - SNAP-ON/ SNAP-OFF FACE SHIELD**

Good face protection, flexible, flat and easy to carry until ready to use. Can be worn over ordinary glasses.

Available in the following eye tints:

- Clear
- Fumé
- Mirror



## **FLIP-UP VISOR - SNAP-ON/ SNAP-OFF FACE SHIELD**

The Flip-Up visor may be instantly lifted up, away from face, but it is always handy for immediate use.

Can be worn over ordinary glasses.

Available in the following eye tints:

- Clear
- Fumé



## **GOGGLE FOR EYE COMFORT AND PROTECTION**

Can be worn over ordinary glasses.

Available in the following eye tints:

- Clear
- Fumé
- Mirror



## **INNER LINING**

Removable and washable liner

Available for all helmets



#### **OFF-ROAD PEAK**

#### **SNAP-ON/SNAP-OFF TOP TO BOTTOM PLASTIC VISOR**

Available in White tint only.



#### **STANDARD PEAK**

#### **SNAP-ON/SNAP-OFF TOP TO BOTTOM PLASTIC VISOR**

Available in Black tint only.



#### **GOGGLE RETAINER**

Retains and holds the goggle on the helmet securely when worn for eye protection.

It has been made in black leather and it has to be fixed (thanks to a strong glue) on the back of the helmet.



#### **CLEAR AND FUMÉ TINTED COVER VISOR**

It is designed exclusively for DMD Rocket helmet.



#### **CLEAR AND FUMÉ TINTED COVER VISOR**

It is designed exclusively for DMD Racer helmet.





# scarves

DMD Scarves Collection includes 9 bandanas with exclusive graphics for both men and women.

Cotton and Silk. 135x135cm.

Made in Italy.



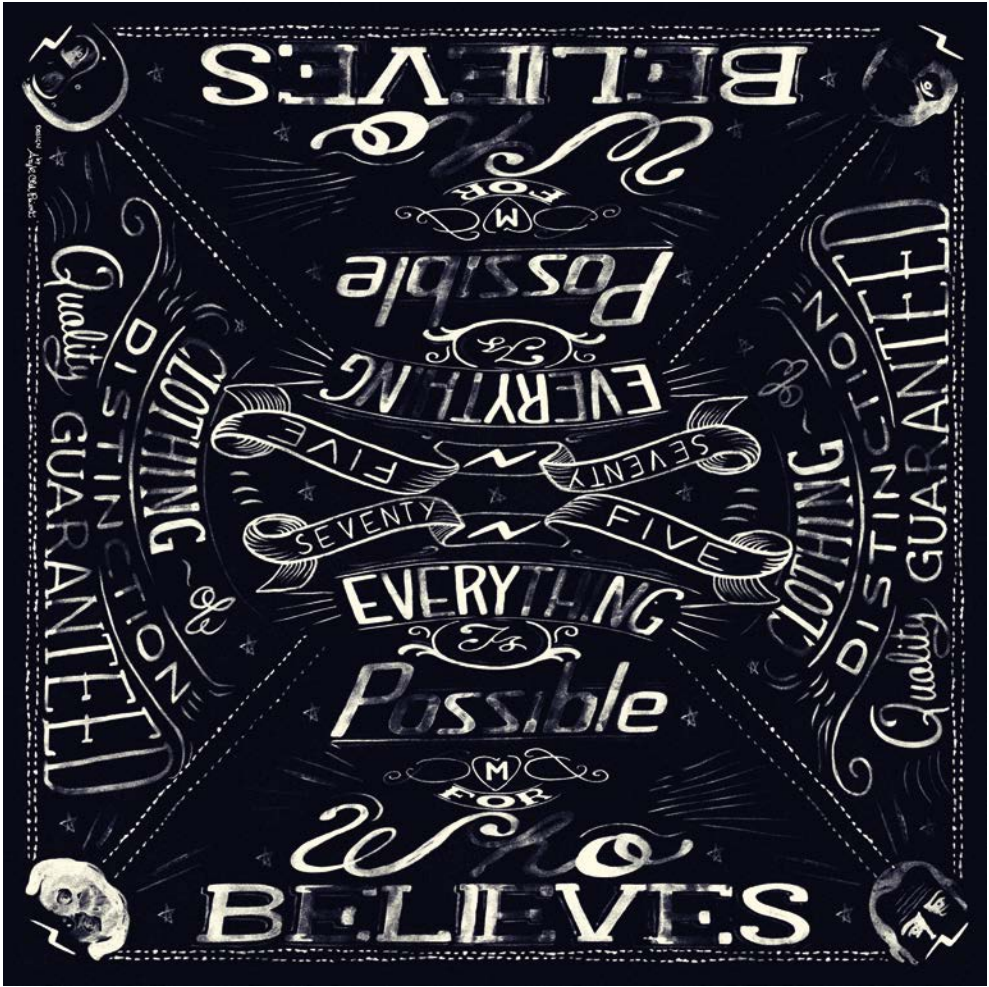
SALVATION MOUNTAIN





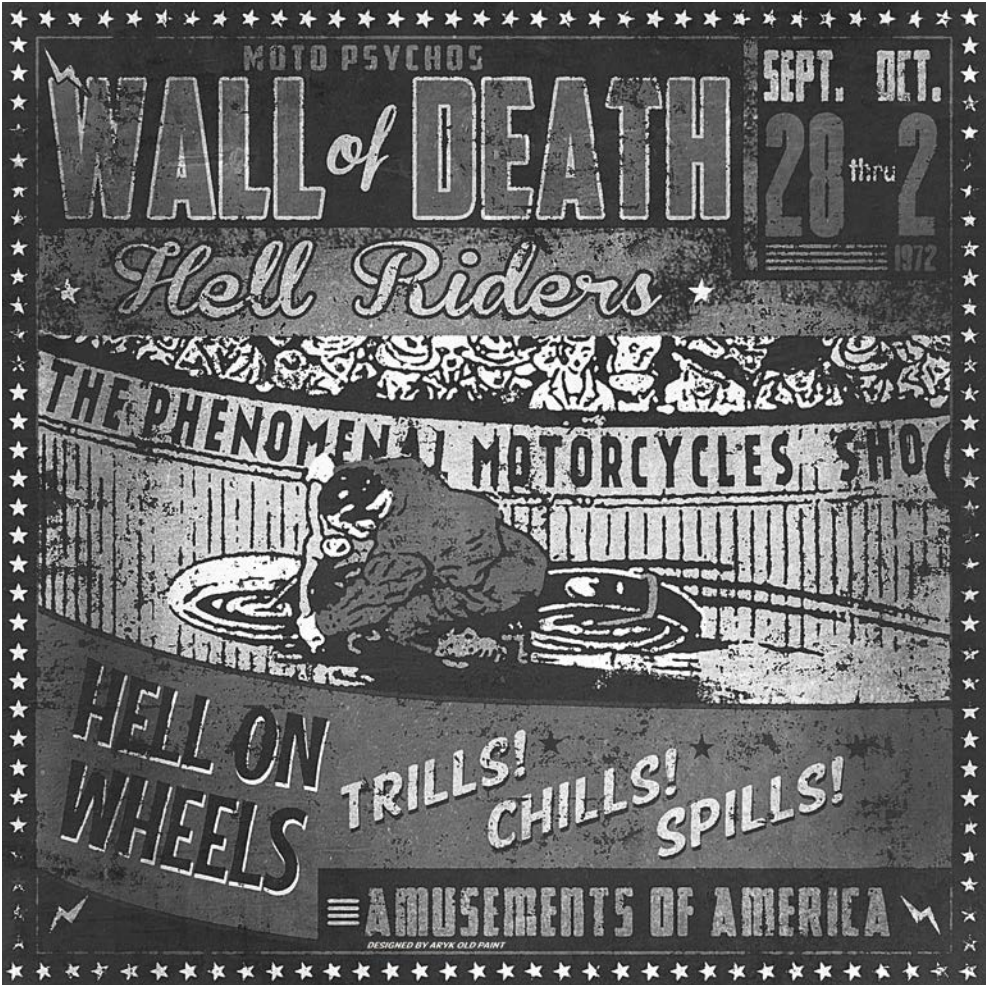
CIRCUS

## page 52



SEVENTYFIVE





HELL RIDERS





**ISLAND**



# solo rider

Solo Rider is a stylish, high-quality and lightweight leather jacket available in two different colors.

Cotton lining.

Stand-up collar.

4 pockets.

S, M, L, XL, XXL.



**BLACK**



**BROWN**

# solo rider

handmade



BLACK



BROWN







# t-shirts and fleeces

The collection includes a line of t-shirts and fleeces.

The Stylistic will was to represent the DMD world essence getting inspired from graphics with an eye on the past.

Available in different colours and graphics.

100% cotton.

S, M, L, XL, XXL.

## T-shirt and fleece



**FURY BEAST**  
Military Green



**FURY BEAST**  
Grey



**MONKEY**  
Grey



**MONKEY**  
White



**PANTHER**  
Dark Grey



**PANTHER**  
White



**SPEED & POWER**  
White



**UNSCRUPOLOUS**  
Military Green



**ENGINE**



**ENGINE**



**FURY BEAST**  
Military Green



**MONKEY**  
Grey

# bags

- > Made in real leather
- > One size
- > Inner pocket
- > L50xW30xH35cm
- > Made in Italy



**BLACK**

# handmade

bags



CIRCUS



THUNDER

# display

## **CREATE YOUR DMD CORNER!**

Helmet display made in vintage wood with metal hooks that combine attractive presentation with maximum product capacity.





**CUBE DISPLAY**  
8 HELMETS  
L70XW37XH200CM



**FLAT DISPLAY**  
9 HELMETS  
L90XW40XH190CM



DMD



DMD



@DMDHelmet

Graphic design project:

**SHOTS.IT**  
PIXELS & PAPER

Photographer:

**KRISTINA FENDER**

[www.dmd.eu](http://www.dmd.eu)

[contact@dmd.eu](mailto:contact@dmd.eu)





